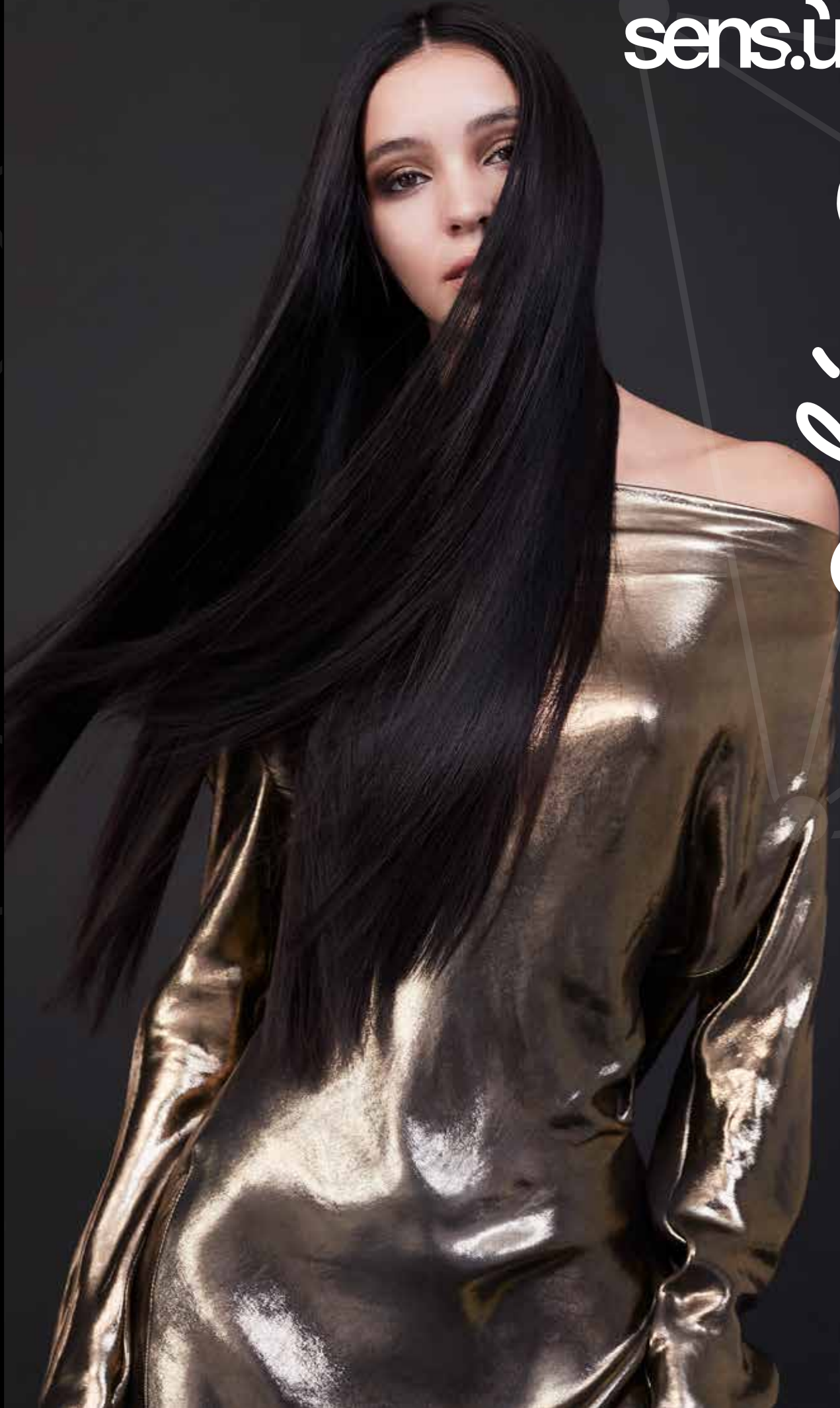


sens.ùs®

oliva



alisa

the new range of straightening products by Sens.ùs,
is enriched with diamond dust, one of the most precious substances in the world.

Diamonds are used in state-of-the-art cosmetics for their physical structure.
The microcrystals in the Alisa products intensify the refraction of the light,
creating an exceptionally bright and brilliant effect.

Luxury that hair deserves!

Sens.ùs is the number one partner of the most attentive and demanding hair stylists.

The **ALISA** system offers you four new treatments that will help enhance your services, generate more sales, boost your image and build your professional skills:

- ◆ Improve daily management of hair
- ◆ Change its texture
- ◆ Repair its structure, where necessary
- ◆ Enhance its brilliance and shine
- ◆ Protect it against humidity

◆ LAMINATION SYSTEM

The Alisa lamination service leaves hair shiny and lustrous, while protecting it from external agents. The lamination effect lasts 6-8 washes (10-12 shampoos). If necessary, the lamination treatment can also be carried out on the same day as the colour service.

◆ ANTI-FRIZZ / WATERPROOF EFFECT

Makes it easier to deal with unwanted frizz in straight, wavy or curly hair and lasts for up to 70 days. It does not alter or restrict the natural movement of wavy or curly hair but ensures the style lasts longer. It is recommended for anyone who wants more manageable hair. It is the quickest of the services and can be carried out at the same time as coloring

◆ NATURALLY STRAIGHT

Is for anyone who wants straight but naturally light and bouncy hair. It lets you create straight looks, add volume to the roots or just blow dry hair with a little help from the brush or hair straighteners at the ends, making hair light and loose. It is ideal for anyone who wants naturally looking straight hair in a short amount of time. The effect lasts more than 90 days.

Once you have chosen the most appropriate service, the next step is to carry out a thorough DIAGNOSIS. This will reveal the characteristics and natural shape of the hair. We suggest washing or wetting and then drying a section of hair at the back to carry out a correct diagnosis. Now you are ready to start the service, so just follow the instructions and tables in this manual.

ALISA is the perfect tool which, in just a couple of easy actions and with its blend of organic acids, promotes your salon's professional taming and straightening skills. **ALISA**, has been created for professional stylists. To deliver unique services.

Communicating with your client is an essential part of the treatment process, as it enables you to understand her expectations and recommend the most suitable **ALISA** service.

◆ DIAMOND BLOW DRY

Is an express styling service that, in just a couple of easy steps, keeps hair looking beautiful and in place for longer. Its gentle film-forming action leaves hair shiny and soft. It lasts for up to two weeks and does not alter the natural movement of hair.

◆ TAMING / VOLUME-REDUCING

Has been designed to enhance the natural movement of hair, while gently taming the shape of waves or curls so they are more manageable for up to 70 days. It is ideal for anyone who wants a hassle-free way of alternating straight looks with wavy looks. This quick service is compatible with coloring and can be performed on the same day.

◆ PERFECTLY STRAIGHT

Gives you maximum control over hair and is for anyone who loves poker straight and well-defined locks. It creates a "hair straightener" smooth effect just by freehand drying and is ideal for clients who want quick, easy-to-manage hair at home. No other technical services can be performed on the same day as this service. The effect lasts more than 90 days.

alisa

F.A.Q.

◆ IS ALISA A STRAIGHTENING TREATMENT?

◆ No, ALISA STRAIGHTENING SHAMPOO and SUPER STRAIGHTENING FLUID are not chemical straightening treatments but anti-frizz/smoothing treatments.

◆ WHATKIND OF HAIR CAN I USE ALISA STRAIGHTENING SHAMPOO AND SUPER STRAIGHTENING FLUID ON?

◆ The ALISA STRAIGHTENING SHAMPOO and SUPER STRAIGHTENING FLUID treatments can be used on all hair types, even colored and/or bleached hair.

◆ DO YOU RECOMMEND USING ALISA STRAIGHTENING SHAMPOO AND SUPER STRAIGHTENING FLUID ON HAIR BEFORE OR AFTER THE COLOR SERVICE?

◆ It depends which one you are using. ALISA STRAIGHTENING SHAMPOO can be used on the same day, immediately after the color service. ALISA SUPER STRAIGHTENING FLUID cannot be used until 5-7 days after the color service.

◆ CAN I ADD ADDITIVES TO ALISA STRAIGHTENING SHAMPOO AND SUPER STRAIGHTENING FLUID TO PROTECT HAIR DURING THE STRAIGHTENING TREATMENT?

◆ No, it's not necessary. The ALISA STRAIGHTENING SHAMPOO and SUPER STRAIGHTENING FLUID formulas are not aggressive and leave hair feeling silky and regenerated after the treatment.

◆ WHY DO I HAVE TO COMPLETELY OR PARTIALLY DRY HAIR AFTER USING ALISA PRE-STRAIGHTENING FLUID AND BEFORE APPLYING ALISA SUPER STRAIGHTENING FLUID?

◆ When hair is completely or partially dry, ALISA SUPER STRAIGHTENING FLUID adheres better to it and the result is more effective and uniform (see the manual for details).

◆ AFTER APPLYING ALISA SUPER STRAIGHTENING FLUID, DO I HAVE TO KEEP HAIR STRAIGHT DURING DEVELOPMENT?

◆ No, ALISA SUPER STRAIGHTENING FLUID is not a classic "straightening" treatment, so you don't have to keep it straight.

◆ CAN I USE JUST THE STRAIGHTENING SHAMPOO OR SUPER STRAIGHTENING FLUID TO GET THE RESULTS I WANT?

◆ No. To achieve the results offered by the ALISA services, you have to follow all the steps in the manual. ALISA PRE-STRAIGHTENING FLUID prepares hair so ALISA STRAIGHTENING SHAMPOO and SUPER STRAIGHTENING FLUID can then do their work, while ALISA RESTORE SHAMPOO and RESTORE BUTTER complete the treatment, leaving hair feeling silky and soft and prolonging the effects of the service.

◆ CAN I USE ALISA PRE-STRAIGHTENING FLUID AS A NORMAL SHAMPOO?

◆ No, ALISA PRE-STRAIGHTENING FLUID is the specific pre-treatment product in the ALISA range. So it cannot be used as a normal shampoo or for other services.

◆ DO I HAVE TO USE HAIR STRAIGHTENERS AT THE END OF THE TREATMENT, AFTER DRYING THE HAIR?

◆ Yes, using hair straighteners is essential. After applying the products, the heat of the hair straighteners actually activates the straightening process.

◆ HOW THICK SHOULD STRANDS BE WHEN USING THE HAIR STRAIGHTENERS?

◆ Depending on the type of treatment, the sections must be 0.5 cm - 2 cm thick (see the manual).

alisa

F.A.Q.

◆ CAN YOU SEE THE SECTIONS WHERE YOU HAVE PASSED THE HAIR STRAIGHTENERS AT THE END OF THE TREATMENT?

◇ No, the ALISA services do not change the natural direction of hair.

◆ HOW LONG WILL HAIR STAY STRAIGHT AFTER THE TREATMENT?

◇ If the ALISA treatment is carried out correctly, it can last more than 90 days.

◆ CAN I REPEAT THE TREATMENT AFTER 90 DAYS?

◇ Of course, the treatment can be repeated as and when it is needed.

◆ DO YOU NEED MAINTENANCE PRODUCTS TO PROLONG THE EFFECT OF THE TREATMENT?

◇ Yes, ALISA treatments must be maintained with ALISA RESTORE SHAMPOO and RESTORE BUTTER to ensure the benefits of the service last over time.

◆ DOES THE ANTI-FRIZZ AND STRAIGHTENING EFFECT CHANGE WITH THE TYPE OF HAIR?

◇ Yes, results can vary slightly according to the type of hair. Just as the development time of ALISA STRAIGHTENING SHAMPOO and SUPER STRAIGHTENING FLUID varies (see the application instructions in the manual).

◆ HOW MANY TREATMENTS CAN I DO WITH A 500 ML BOTTLE OF ALISA STRAIGHTENING SHAMPOO AND SUPER STRAIGHTENING FLUID?

◇ One bottle (500 ml) of ALISA STRAIGHTENING SHAMPOO or SUPER STRAIGHTENING FLUID will give you 8 - 12 applications on hair of average amount and length.

◆ WHAT IS HAIR LAMINATION?

◇ Lamination is a treatment which leaves hair extremely glossy and shiny, while leaving the structure of the hair unchanged in terms of colour and shape. After the Alisa Glow Lamination System services, hair will be exceptionally glossy and hydrated.

◆ HOW LONG DOES THE LAMINATION SERVICE TAKE?

◇ One of the great advantages of the Alisa Glow Lamination System services, in addition to the glossy shine effect on hair, is the speed of the services. In fact, the lamination services take only a little longer than styling.

◆ HOW LONG DOES THE ALISA LAMINATION TREATMENT LAST?

◇ How long the Lamination System Pro and Express treatments last partly depends on how the treatment is maintained at home. On average, the effect lasts for 15-20 days, but can last longer if maintained with suitable products. On the other hand, if suitable maintenance is not kept up, it will not last as long.

The Home Lamination System treatment lasts for 4-7 days. Again, if properly maintained, it may last for longer.

◆ CAN I GET THE ALISA LAMINATION SYSTEM PRO AND EXPRESS TREATMENTS ON THE SAME DAY AS THE TECHNICAL SERVICE?

◇ The lamination service is mainly intended for straight or wavy hair, using a heat-styling tool. The heat-treatment step of the lamination process leaves the hair straight and shiny. The last step is the application of Glow Drops, completing the service. If the intention is to use a diffuser for a curly style, the best Alisa service we can recommend is the anti-frizz service.

◆ DOES THE LAMINATION PROCESS TURN OUT THE SAME IF MORE OR FEWER DOSES OF THE PRODUCTS ARE USED?

◇ The dosages recommended in this manual should be considered indicative as hair thickness, quantity and length can vary greatly. The most important thing is to carry out the steps in the order indicated.

◆ WHY ISN'T IT NECESSARY TO USE THE GLOW DROPS BEFORE DRYING FOR MAINTENANCE, BUT ONLY THE RESTORE BUTTER?

◇ It is not necessary to apply Glow Drops as part of the Home Lamination System (between shampoo and mask) every time the hair is washed. Instead, the Home Lamination System treatment can be carried out once a week. For any intermediate wash(es), the maintenance procedure is more than sufficient.





LAMINATION SYSTEM PRO

1 PREPARATION - RESTORE SHAMPOO



Wash hair with **RESTORE SHAMPOO**, gently massaging the hair and scalp.

Use the **RESTORE SHAMPOO** TWICE, lathering and leaving the second application in place for 2-3 minutes.

Massage scalp and hair and rinse well. Towel dry to eliminate excess water.

2 PREPARATION FOR THE LAMINATION TREATMENT RESTORE BUTTER + GLOW POTION

Comb the hair and section it into the classic 4 quadrants.



Prepare the **RESTORE BUTTER + GLOW POTION** mixture in a bowl, using equal doses and taking the thickness and length of hair into account as set out below:

HAIR LENGTH	RESTORE BUTTER	GLOW POTION
LONG	40g	40g
MEDIUM	30g	30g
SHORT	20g	20g

3 LAMINATION SERVICE

Starting from the bottom and back of the head, apply the mixture with the brush, starting 1 cm from the hairline and taking 2-4 cm sections.

Comb using a wide-tooth comb to distribute the product uniformly and leave in place for 5 minutes.

4 RINSING AND DRYING

Once the processing time has elapsed, rinse thoroughly. Dry the hair completely, smoothing it with the aid of a brush.

Make sure that it is 100% dry, combing it with a brush or comb. **This step is important.** Pay particular attention to the trickier zones such as the nape, hairlines, top and front.

5 HEAT-TREATMENT STEP - SENS.ÛS FLAT IRON



Allow the hair to cool for around 2 minutes and make sure that all parts are completely dry. Adjust the temperature of the flat iron in accordance with the instructions given in the table below.

HAIR TYPE	TEMPERATURE
THICK	150° C – 200° C
MEDIUM	150° C – 180° C
FINE	150° C – 160° C

N.B. The temperature recommendations are guidelines, and must always be considered in the context of the hair structure (natural/coloured/lightened) and adapted as required. The more the hair has been treated, the lower the temperature.

Choosing the right temperature is essential for achieving an excellent result. This makes the use of a flat iron with an adjustable temperature indispensable. Apply the flat iron, passing it over hair in sections of around 2-3 cm.

6 COMPLETING THE LAMINATION SERVICE

After finishing the heat-treatment step, complete the service with **GLOW DROPS**. Use the drop dispenser to dose the **GLOW DROPS**.



Dispense 2 to 6 squeezes/doses depending on the hair type (2 squeezes for short, fine hair / 6 squeezes for long, thick hair).

Apply evenly to the hair, gently rubbing the mid-lengths and ends.

N.B. GLOW DROPS are designed for use on mid-lengths and ends. This means it is not necessary to apply them to the first 3-4 cm of hair.

LAMINATION SYSTEM MAINTENANCE

Wash hair with **RESTORE SHAMPOO**. Use twice, leaving the second application in place for 2-3 minutes. Rinse well.

Apply **RESTORE BUTTER** to the mid-lengths and ends and leave in place for 5 minutes.



Rinse carefully and dry, smoothing the hair with a brush and hair dryer. Flat-iron the hair at a temperature between 150 °C (fine or treated hair) and 200 °C (healthy, thick hair).

Apply 2 to 6 drops of **GLOW DROPS**, gently rubbing the mid-lengths and ends.

LAMINATION SYSTEM EXPRESS

1 PREPARATION - RESTORE SHAMPOO



Wash hair with **RESTORE SHAMPOO**, gently massaging the hair and scalp.

Use the **RESTORE SHAMPOO** TWICE, lathering and leaving the second application in place for 2-3 minutes.

Massage scalp and hair and rinse well. Towel dry to eliminate excess water.

2 LAMINATION EXPRESS - GLOW POTION



Apply GLOW POTION to the mid-lengths and ends of damp hair, massage gently for even distribution, comb and leave in place for 2 minutes. Rinse well.

3 DRYING

Dry the hair completely, smoothing it with the aid of a brush.

Make sure that it is 100% dry, combing it with a brush or comb.

This step is important.

Pay particular attention to the trickier zones such as the nape, hairlines, top and front.

4 HEAT-TREATMENT STEP - SENS.ÙS FLAT IRON



Allow the hair to cool for around 2 minutes and make sure that all parts are completely dry. Adjust the temperature of the flat iron in accordance with the instructions given in the table below.

HAIR TYPE	TEMPERATURE
THICK	150° C – 200° C
MEDIUM	150° C – 180° C
FINE	150° C – 160° C

N.B. The temperature recommendations are guidelines, and must always be considered in the context of the hair structure (natural/coloured/lightened) and adapted as required. The more the hair has been treated, the lower the temperature.

Choosing the right temperature is essential for achieving an excellent result. This makes the use of a flat iron with an adjustable temperature indispensable. Apply the flat iron, passing it over hair in sections of around 2-3 cm

5 COMPLETING THE LAMINATION SYSTEM EXPRESS SERVICE

After finishing the heat-treatment step, complete the service with **GLOW DROPS**. Use the drop dispenser to dose the **GLOW DROPS**.



Dispense 2 to 6 squeezes/doses depending on the hair type (2 squeezes for short, fine hair / 6 squeezes for long, thick hair).

Apply evenly to the hair, gently rubbing the mid-lengths and ends.

N.B. GLOW DROPS are designed for use on mid-lengths and ends. This means it is not necessary to apply them to the first 3-4 cm of hair.

LAMINATION SYSTEM MAINTENANCE

Wash hair with **RESTORE SHAMPOO**. Use twice, leaving the second application in place for 2-3 minutes. Rinse well.



Apply **RESTORE BUTTER** to the mid-lengths and ends and leave in place for 5 minutes.

Rinse carefully and dry, smoothing the hair with a brush and hair dryer. Flat-iron the hair at a temperature between 150 °C (fine or treated hair) and 200 °C (healthy, thick hair).

Apply 2 to 6 drops of **GLOW DROPS**, gently rubbing the mid-lengths and ends.

HOME LAMINATION SYSTEM

1 PREPARATION - RESTORE SHAMPOO



Wash hair with **RESTORE SHAMPOO**, gently massaging the hair and scalp.

Use the **RESTORE SHAMPOO** TWICE, lathering and leaving the second application in place for 2-3 minutes.

Massage scalp and hair and rinse well. Towel dry to eliminate excess water.

2 TREATMENT – GLOW DROPS & RESTORE BUTTER

Dispense a few drops of GLOW DROPS and apply to damp hair



Next, without rinsing the hair, apply **RESTORE BUTTER** and massage the mid-lengths and ends well. Leave in place for 5 minutes.

HAIR LENGTH	GLOW DROPS
LONG	8 drops
MEDIUM	6 drops
SHORT	4 drops

3 RINSING AND DRYING

Once the processing time has elapsed, rinse thoroughly. Dry the hair completely, smoothing it with the aid of a brush.

Verificare che siano asciutti al 100% pettinando con una spazzola o un pettine.

Questo passaggio è importante.

Porre particolare attenzione nelle zone più difficili come nuca, attaccature, zona superiore e frontale.

4 HEAT-TREATMENT STEP - PIASTRA

Allow the hair to cool for around 2 minutes and make sure that all parts are completely dry. Adjust the temperature of the flat iron in accordance with the instructions given in the table below.

HAIR TYPE	TEMPERATURE
THICK	150° C – 200° C
MEDIUM	150° C – 180° C
FINE	150° C – 160° C

N.B. The temperature recommendations are guidelines, and must always be considered in the context of the hair structure (natural/coloured/lightened) and adapted as required. The more the hair has been treated, the lower the temperature.

Choosing the right temperature is essential for achieving an excellent result. This makes the use of a flat iron with an adjustable temperature indispensable. Apply the flat iron, passing it over hair in sections of around 2-3 cm

5 COMPLETING THE HOME LAMINATION SYSTEM SERVICE

After finishing the heat-treatment step, complete the service with **GLOW DROPS**. Use the drop dispenser to dose the **GLOW DROPS**.



Dispense 2 to 6 squeezes/doses depending on the hair type (2 squeezes for short, fine hair / 6 squeezes for long, thick hair).

Apply evenly to the hair, gently rubbing the mid-lengths and ends.

N.B. GLOW DROPS are designed for use on mid-lengths and ends. This means it is not necessary to apply them to the first 3-4 cm of hair.

LAMINATION SYSTEM MAINTENANCE

Wash hair with **RESTORE SHAMPOO**. Use twice, leaving the second application in place for 2-3 minutes. Rinse well.



Apply **RESTORE BUTTER** to the mid-lengths and ends and leave in place for 5 minutes.

Rinse carefully and dry, smoothing the hair with a brush and hair dryer. Flat-iron the hair at a temperature between 150 °C (fine or treated hair) and 200 °C (healthy, thick hair).

Apply 2 to 6 drops of **GLOW DROPS**, gently rubbing the mid-lengths and ends.

alisa



DIAMOND BLOW DRY

1 PREPARATION - RESTORE SHAMPOO



- ◆ Wet hair and apply RESTORE SHAMPOO.
- ◆ Massage scalp and hair gently. Work into a lather then rinse thoroughly.
- ◆ Repeat if necessary.

◆ After rinsing, towel hair dry to remove any excess water.

2 TREATMENT - STRAIGHTENING SHAMPOO + RESTORE SHAMPOO 5ml+5ml



- ◆ Wear protective gloves before beginning the treatment.
- ◆ Pour 5 ml of STRAIGHTENING SHAMPOO + 5 ml of RESTORE SHAMPOO into the applicator bottle (increase the amount if hair is particularly long).

◆ Apply evenly over all the hair and work into a rich, thick lather without massaging the scalp (shake the bottle gently before applying).

◆ Leave for 5 minutes without covering hair. Do not use a heat source.

N.B. STRAIGHTENING SHAMPOO is a beauty treatment for hair. It should not, therefore, be applied directly to the scalp.

3 RINSING



- ◆ Once development time is over, rinse hair thoroughly. Towel dry and apply 20 g - 40 g of ALISA RESTORE BUTTER and leave for 5 minutes.

◆ Rinse thoroughly.

◆ Hair is now ready for drying and styling as desired: smooth, curly or wavy.

alisa

ANTI-FRIZZ / WATERPROOF EFFECT

1 PREPARATION - PRE-STRAIGHTENING FLUID



- Wash hair with 30 ml of PRE-STRAIGHTENING FLUID.
- Massage scalp and hair gently. Work into a lather and leave for 5 minutes. Rinse thoroughly.
- Towel hair dry to remove any excess water.

N.B. If the Anti-frizz/Waterproof Effect treatment is carried out immediately after a color service, always prepare hair with ALISA RESTORE SHAMPOO instead of PRE-STRAIGHTENING FLUID, following the same instructions.

2 TREATMENT - STRAIGHTENING SHAMPOO



- Wear protective gloves before beginning the treatment.
- Pour 20 ml (short hair), 40 ml (medium-length hair) or 60 ml (long hair) of STRAIGHTENING SHAMPOO into the applicator bottle (increase the amount if hair is particularly long).

Apply the undiluted product evenly over hair, massaging it in with your hands to create a rich and compact lather (shake the bottle gently before each application).

Leave for 10-12 minutes, covering hair with a cap. Do not use a heat source.

N.B. STRAIGHTENING SHAMPOO is a beauty treatment for hair. It should not, therefore, be applied directly to the scalp.

3 RINSING AND DRYING

Once development time is over, rinse hair thoroughly. Dry completely. Check it is 100% dry by brushing or combing it (This step is important. Take special care in the **more difficult areas such as** the nape, hairlines, top and front of the head).

4 HEATAPPLICATION-SENS.ÛSHAIRSTRAIGHTENERS

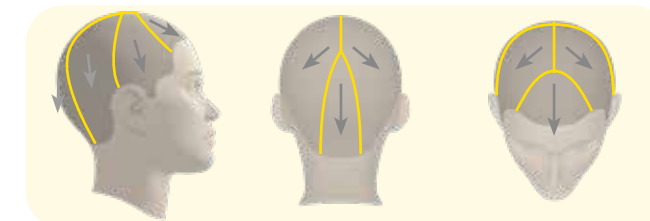


- Divide the hair into 6 sections as shown in the diagram using a tail comb.
- Separate the strands at the back of the neck into 1.5-2.0 cm thick horizontal sections.
- Hold the strand taut with a heat-resistant comb [SENS.Û ALISA COMB].

4 HEATAPPLICATION-SENS.ÛSHAIRSTRAIGHTENERS

Run the straighteners over each individual strand 4 times. Consult the table for the correct temperature.

SECTIONS FOR APPLYING HEAT



TEMPERATURES TABLE

After going over the first strands at the back of the neck, check if there has been any color loss. If the color has not changed, increase the temperature by 10°/20° until it is stable or has a maximum change of half a level.

Any color fade can be restored by using DIRECT FARD in the same quantity as ALISA RESTORE BUTTER.

HAIR TYPE	TEMPERATURE °C		NO. OF PASSES WITH HAIR STRAIGHTENERS	
NATURAL STRONG	230°C		4 passes NB. 1.5 - 2.0 cm thick strands	check how the first strands react
NATURAL	lower temperature if necessary			
COLORED OR LIGHTENED <50%	200°C - 210°C*	increase the temperature in 10°C intervals, if possible, to achieve the maximum effect		
LIGHTENED/ BLEACHED> 50%	180°C*			
WHITE	160°C*			

*the temperatures are given purely as an indication and should always be checked, taking into consideration the hair structure (medium/fine/thick) and if there is any color change in the first strand. Alter temperatures according to the hair diagnosis.

5 FINAL STAGE

The Anti-Frizz/Waterproof Effect treatment is now finished. Hair is smooth and silky. If the client wants a natural, anti-frizz effect, proceed as follows:

Rinse hair with plenty of water.



Towel dry and apply 20 - 40g of ALISA RESTORE BUTTER and leave for 5 minutes.

Rinse thoroughly.

N.B. If necessary, you can use 6 to 9 pumps of the heat protector Illumyna Thermo Discipline Milk. Then style and dry as desired.

MAINTAINING THE TREATMENT

Wash hair with **RESTORE SHAMPOO**. Use twice, leaving the second application in place for 2-3 minutes.

Rinse well. Apply **RESTORE BUTTER** to the mid-lengths and ends and leave in place for 5 minutes. Rinse carefully and proceed to style the hair as normal. The Alisa Anti-frizz and taming treatment does not replace styling products, but improves hair definition and management.



alisa

TAMING / VOLUME-REDUCING

1 PREPARATION - PRE-STRAIGHTENING FLUID



- Wash hair with 30 ml of PRE-STRAIGHTENING FLUID.
- Massage scalp and hair gently. Work into a lather and leave for 5 minutes. Rinse thoroughly.
- Towel hair dry to remove any excess water.

N.B. If the Taming/Volume Reducing treatment is carried out immediately after a color service, always prepare hair with ALISA RESTORE SHAMPOO instead of PRE-STRAIGHTENING FLUID, following the same instructions.

2 TREATMENT - STRAIGHTENING SHAMPOO



- Wear protective gloves before beginning the treatment.
- Pour 20 ml (short hair), 40 ml (medium-length hair) or 60 ml (long hair) of STRAIGHTENING SHAMPOO into the applicator bottle (increase the amount if hair is particularly long).

Apply the undiluted product evenly over hair, massaging it in with your hands to create a rich and compact lather (shake the bottle gently before each application).

Leave for 15-20 minutes, covering hair with a cap. Do not use a heat source.

N.B. STRAIGHTENING SHAMPOO is a beauty treatment for hair. It should not, therefore, be applied directly to the scalp.

3 RINSING AND DRYING

Once development time is over, rinse hair thoroughly. Dry completely. Check it is 100% dry by brushing or combing it (This step is important. Take special care in the more difficult areas such as the nape, hairlines, top and front of the head).

4 HEATAPPLICATION-SENS.ÛSHAIRSTRAIGHTENERS

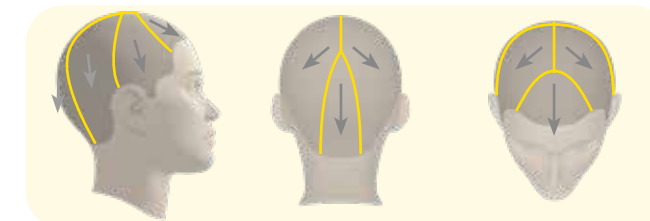


- Divide the hair into 6 sections as shown in the diagram using a tail comb.
- Separate the strands at the back of the neck into 1.0-1.5 cm thick horizontal sections.
- Hold the strand taut with a heat-resistant comb [SENS.Û ALISA COMB].

4 HEATAPPLICATION-SENS.ÛSHAIRSTRAIGHTENERS

Run the straighteners over each individual strand 6 times. Consult the table for the correct temperature.

SECTIONS FOR APPLYING HEAT



TEMPERATURES TABLE

After going over the first strands at the back of the neck, check if there has been any color loss. If the color has not changed, increase the temperature by 10°/20° until it is stable or has a maximum change of half a level.

Any color fade can be restored by using DIRECT FARD in the same quantity as ALISA RESTORE BUTTER.

HAIR TYPE	TEMPERATURE °C		NO. OF PASSES WITH HAIR STRAIGHTENERS	
NATURAL STRONG	230°C		6 passes NB. 1.0 - 1.5 cm thick strands	check how the first strands react
NATURAL	lower temperature if necessary			
COLORED OR LIGHTENED <50%	200°C - 210°C*	increase the temperature in 10°C intervals, if possible, to achieve the maximum effect		
LIGHTENED/ BLEACHED> 50%	180°C*			
WHITE	160°C*			

*the temperatures are given purely as an indication and should always be checked, taking into consideration the hair structure (medium/fine/thick) and if there is any color change in the first strand. Alter temperatures according to the hair diagnosis.

5 FINAL STAGE

The Taming/Volume-Reducing Treatment is now finished. Hair is smooth and silky. If the client wants a natural-looking tamed effect, proceed as follows:

Rinse hair with plenty of water.



Towel dry and apply 20 - 40g of ALISA RESTORE BUTTER and leave for 5 minutes.

Rinse thoroughly.

N.B. If necessary, you can use 6 to 9 pumps of the heat protector Illumyna Thermo Discipline Milk. Then style and dry as desired.

MAINTAINING THE TREATMENT

Wash hair with **RESTORE SHAMPOO**. Use twice, leaving the second application in place for 2-3 minutes. Rinse well. Apply **RESTORE BUTTER** to the mid-lengths and ends and leave in place for 5 minutes. Rinse carefully and proceed to style the hair as normal. The Alisa Anti-frizz and taming treatment does not replace styling products, but improves hair definition and management. If necessary, apply between 2 and 6 squeezes/doses of **GLOW DROPS** using the drop dispenser, gently rubbing the hair.



NATURALLY STRAIGHT

1 PREPARATION - PRE-STRAIGHTENING FLUID



- Wash hair with PRE-STRAIGHTENING FLUID.
- Massage scalp and hair gently. Work into a lather, repeat the application and leave following the instructions in the Hair Type Table below.

Rinse thoroughly. Towel hair dry to remove any excess water.

HAIR TYPE TABLE			
HAIR TYPE	NO. SHAMPOOS	RECOMMENDED DEV.TIME	N.B.
NATURAL STRONG	3-4 applications of Pre-straightening Fluid	6-8 minutes dev. time (last app. Pre-Straightening Fluid)	Do not rinse completely, leave approx. 50% lather between the various applications of Pre-Straightening Fluid. Only rinse completely after the last shampoo.
NATURAL			
COLORED OR LIGHTENED <50%	2-3 applications of Pre-straightening Fluid	3-5 minutes dev. time (last app. Pre-Straightening Fluid)	
LIGHTENED/ BLEACHED >50% WHITE	1-2 applications of Pre-straightening Fluid	2-3 minutes dev. time (last app. Pre-Straightening Fluid)	

N.B. the development times are indicative and vary according to the diagnosis conducted.

2 DRYING

To make hair more manageable and easier to brush during the various stages of the treatment and obtain the best possible results with ALISA SUPER STRAIGHTENING FLUID, we recommend spraying a small amount of T@b>u Heat Shield on damp hair, especially on more sensitized or damaged ends; then dry hair following the instructions in the table below.

DRYING TABLE	
HAIR TYPE	SUGGESTION
NATURAL	Dry completely - 100%
COLORED OR LIGHTENED <50%	Dry hair up to 70%
LIGHTENED/ BLEACHED > 50% WHITE	Keep the ends damp

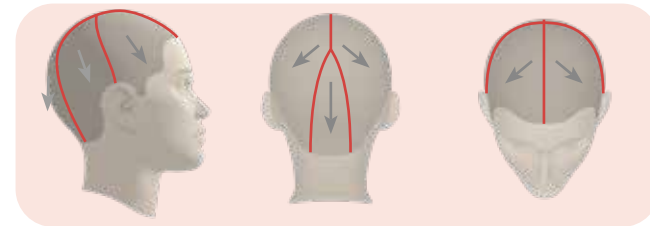
3 TREATMENT - SUPER STRAIGHTENING FLUID



- Wear protective gloves before beginning the treatment.
- Divide the hair into 5 sections as shown in the diagram using a tail comb. This will ensure optimum distribution, even on more difficult areas.

3 TREATMENT - SUPER STRAIGHTENING FLUID

SECTIONS DIAGRAM



Shake the bottle and pour 30 - 50 g of ALISA SUPER STRAIGHTENING FLUID into a plastic bowl (the amount of product varies according to the length and amount of hair).

Start at the back of the head, dividing the hair into 0.5 cm thick horizontal sections and apply ALISA SUPER STRAIGHTENING FLUID using a stiff bristled brush.

Apply ALISA SUPER STRAIGHTENING FLUID from 0.5 cm from the scalp to the ends.

Massage every strand gently with your hands to ensure the product is distributed properly over all the hair.

When each section is finished, gently twist the hair up and secure it with a clip. This will keep it nice and damp.

Leave, without covering, following the instructions in the Development Time Table below.

HAIR TYPE	DEV. TIME	WARNINGS
NATURAL STRONG	35'	RINSE HAIR LIGHTLY (max 15") AFTER THE DEV. TIME
NATURAL	30'	
COLORED OR LIGHTENED <50%	25'	
LIGHTENED/ BLEACHED > 50% WHITE	15' - 20'	

NB. SUPER STRAIGHTENING FLUID is a beauty treatment for hair. It should not, therefore, be applied directly to the scalp.

4 RINSING AND DRYING

Once development time is up, if applicable, rinse hair lightly with warm water (see previous Development Time Table), to eliminate any excess product.

Dry completely. Check it is 100% dry by brushing or combing it (This step is important. Take special care in the more difficult areas such as the nape, hairlines, top and front of the head). If the hair is difficult to brush, apply T@b>u Heat Shield to make it more manageable and easier to brush during the various stages of the treatment and obtain the best possible results.

4 RINSING AND DRYING

If the hair is difficult to brush, apply T@b>u Heat Shield to make it more manageable and easier to brush during the various stages of the treatment and obtain the best possible results.

5 HEAT APPLICATION - SENS.ÛS HAIR STRAIGHTENERS

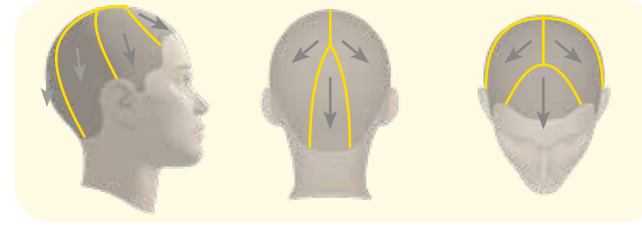
Before using the hair straighteners, make sure the hair is completely dry.



Adjust the temperature of the hair straighteners following the instructions in the table below. Choosing the right temperature is key to obtaining the best results, so SENS.ÛS HAIR STRAIGHTENERS with their adjustable temperature are essential.

Divide the hair into 6 sections as shown in the diagram using a tail comb.

SECTIONS FOR APPLYING HEAT



After going over the first strands at the back of the neck, check if there has been any color loss. If the color has not changed, increase the temperature by 10°/20° until it is stable or has a maximum change of half a level.

Any color fade can be restored by using DIRECT FARD in the same quantity as ALISA RESTORE BUTTER.

HAIR TYPE	TEMPERATURE °C		NO. OF PASSES WITH HAIR STRAIGHTENERS	
NATURAL STRONG	230°C lower temperature if necessary		10	check how the first strands react
NATURAL				
COLORED OR LIGHTENED <50%	200°C - 210°C*	increase the temperature in 10°C intervals, if possible, to achieve the maximum effect	7	
LIGHTENED/ BLEACHED > 50%	180°C*		6	
WHITE	160°C*		5	

*the temperatures are given purely as an indication and should always be checked, taking into consideration the hair structure (medium/fine/thick) and if there is any color change in the first strand. Alter temperatures according to the hair diagnosis.

Separate the strands at the back of the neck into 0.5 cm thick horizontal sections. Hold the strand taut with a heat-resistant comb [SENS.ÛS ALISA COMB] then run the hair straighteners from the roots to the ends, checking the result every time to make sure the temperature is right and that there is no color change (see the Hair Straighteners Temperature Table below).



When using the hair straighteners near the scalp, elevate the sections perpendicular to the hairline to make it easier to go over the first centimeter of hair.

Take care in the more difficult areas (back of the neck and at the front), increasing the number of passes there.

6 FINAL STAGE



Rinse hair with plenty of water, apply ALISA RESTORE SHAMPOO, massage gently and rinse.

The shampoo does not need to be left in this stage of the process.

Towel hair dry and apply 20 - 40g of ALISA RESTORE BUTTER and leave for 5 minutes. Rinse thoroughly.

In the event of any loss of shade or tone, mix equal amounts of ALISA RESTORE BUTTER with Direct Fard, choosing the most suitable shade to restore the color. Cover hair with a cap and leave under a heat source for 5/10 minutes then rinse.

After rinsing and toweling dry, it is possible to use the heat protector Illumyna Thermo Discipline Milk (6 - 9 pumps).

Blow dry hair, directing the air from the hair dryer from top to bottom, accompanying it gently with your hands.

N.B. The treatment is still active after drying. If the problem areas are still slightly wavy, we recommend going over them 5 more times with the hair straighteners, following the same instructions and using the same temperature as before.

After finishing the heat-treatment step, complete the service with **GLOW DROPS**. Use the drop dispenser to dose the **GLOW DROPS**.



Dispense 2 to 6 squeezes/doses depending on the hair type (2 squeezes for short, fine hair / 6 squeezes for long, thick hair).

Apply evenly to the hair, gently rubbing the mid-lengths and ends.

N.B. GLOW DROPS are designed for use on mid-lengths and ends. This means it is not necessary to apply them to the first 3-4 cm of hair.

MAINTAINING THE TREATMENT

Wash hair with **RESTORE SHAMPOO**. Use twice, leaving the second application in place for 2-3 minutes. Rinse well. Apply **RESTORE BUTTER** to the mid-lengths and ends and leave in place for 5 minutes. Rinse carefully and proceed to style the hair as normal. The Alisa Anti-frizz and taming treatment does not replace styling products, but improves hair definition and management. If necessary, apply between 2 and 6 squeezes/doses of **GLOW DROPS** using the drop dispenser, gently rubbing the hair.



PERFECTLY STRAIGHT

1 PREPARATION - PRE-STRAIGHTENING FLUID



- Wash hair with PRE-STRAIGHTENING FLUID.
- Massage scalp and hair gently. Work into a lather, repeat the application and leave following the instructions in the Hair Type Table below.

Rinse thoroughly. Towel hair dry to remove any excess water.

HAIR TYPE TABLE			
HAIR TYPE	NO. SHAMPOOS	RECOMMENDED DEV.TIME	N.B.
NATURAL STRONG	3-4 applications of Pre-straightening Fluid	6-8 minutes dev. time (last app. Pre-Straightening Fluid)	Do not rinse completely, leave approx. 50% lather between the various applications of Pre-Straightening Fluid. Only rinse completely after the last shampoo.
NATURAL			
COLORED OR LIGHTENED <50%	2-3 applications of Pre-straightening Fluid	3-5 minutes dev. time (last app. Pre-Straightening Fluid)	
LIGHTENED/ BLEACHED >50% WHITE	1-2 applications of Pre-straightening Fluid	2-3 minutes dev. time (last app. Pre-Straightening Fluid)	

N.B. the development times are indicative and vary according to the diagnosis conducted.

2 DRYING

To make hair more manageable and easier to brush during the various stages of the treatment and obtain the best possible results with ALISA SUPER STRAIGHTENING FLUID, we recommend spraying a small amount of T@b>u Heat Shield on damp hair, especially on more sensitized or damaged ends; then dry hair following the instructions in the table below.

DRYING TABLE	
HAIR TYPE	SUGGESTION
NATURAL	Dry completely - 100%
COLORED OR LIGHTENED <50%	Dry hair up to 70%
LIGHTENED/ BLEACHED > 50% WHITE	Keep the ends damp

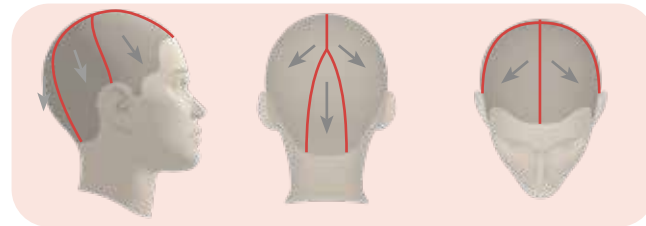
3 TREATMENT - SUPER STRAIGHTENING FLUID



- Wear protective gloves before beginning the treatment.
- Divide the hair into 5 sections as shown in the diagram using a tail comb. This will ensure optimum distribution, even on more difficult areas.

3 TREATMENT - SUPER STRAIGHTENING FLUID

SECTIONS DIAGRAM



Shake the bottle and pour 30 - 50 g of ALISA SUPER STRAIGHTENING FLUID into a plastic bowl (the amount of product varies according to the length and amount of hair).

Start at the back of the head, dividing the hair into 0.5 cm thick horizontal sections and apply ALISA SUPER STRAIGHTENING FLUID using a stiff bristled brush.

Apply ALISA SUPER STRAIGHTENING FLUID from 0.5 cm from the scalp to the ends.

Massage every strand gently with your hands to ensure the product is distributed properly over all the hair.

When each section is finished, gently twist the hair up and secure it with a clip. This will keep it nice and damp.

Leave, without covering, following the instructions in the Development Time Table below.

HAIR TYPE	DEV. TIME	WARNINGS
NATURAL	35'	Do not rinse
COLORED OR LIGHTENED <50%	30'	RINSE HAIR LIGHTLY (max 15") AFTER THE DEV. TIME
LIGHTENED/ BLEACHED > 50% WHITE	20' - 25'	

NB. SUPER STRAIGHTENING FLUID is a beauty treatment for hair. It should not, therefore, be applied directly to the scalp.

4 RINSING AND DRYING

Once development time is up, if applicable, rinse hair lightly with warm water (see previous Development Time Table), to eliminate any excess product.

Dry completely. Check it is 100% dry by brushing or combing it (This step is important. Take special care in the more difficult areas such as the nape, hairlines, top and front of the head). If the hair is difficult to brush, apply T@b>u Heat Shield to make it more manageable and easier to brush during the various stages of the treatment and obtain the best possible results.

4 RINSING AND DRYING

If the hair is difficult to brush, apply T@b>u Heat Shield to make it more manageable and easier to brush during the various stages of the treatment and obtain the best possible results.

5 HEAT APPLICATION - SENS.ÛS HAIR STRAIGHTENERS

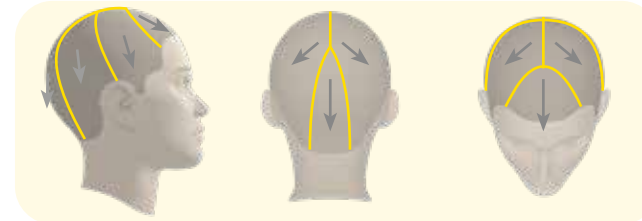
Before using the hair straighteners, make sure the hair is completely dry.



Adjust the temperature of the hair straighteners following the instructions in the table below. Choosing the right temperature is key to obtaining the best results, so SENS.ÛS HAIR STRAIGHTENERS with their adjustable temperature are essential.

Divide the hair into 6 sections as shown in the diagram using a tail comb.

SECTIONS FOR APPLYING HEAT



After going over the first strands at the back of the neck, check if there has been any color loss. If the color has not changed, increase the temperature by 10°/20° until it is stable or has a maximum change of half a level. Any color fade can be restored by using DIRECT FARD in the same quantity as ALISA RESTORE BUTTER.

HAIR TYPE	TEMPERATURE °C		NO. OF PASSES WITH HAIR STRAIGHTENERS	
NATURAL STRONG	230°C lower temperature if necessary		12	check how the first strands react NB 0,5 cm
NATURAL				
COLORED OR LIGHTENED <50%	200°C - 210°C*	increase the temperature in 10°C intervals, if possible, to achieve the maximum effect	8	
LIGHTENED/ BLEACHED > 50%	180°C*		7	
WHITE	160°C*		6	

*the temperatures are given purely as an indication and should always be checked, taking into consideration the hair structure (medium/fine/thick) and if there is any color change in the first strand. Alter temperatures according to the hair diagnosis.

Separate the strands at the back of the neck into 0.5 cm thick horizontal sections. Hold the strand taut with a heat-resistant comb [SENS.ÛS ALISA COMB] then run the hair straighteners from the roots to the ends, checking the result every time to make sure the temperature is right and that there is no color change (see the Hair Straighteners Temperature Table below).



When using the hair straighteners near the scalp, elevate the sections perpendicular to the hairline to make it easier to go over the first centimeter of hair.

Take care in the more difficult areas (back of the neck and at the front), increasing the number of passes there.

6 FINAL STAGE



Rinse hair with plenty of water, apply ALISA RESTORE SHAMPOO, massage gently and rinse.

The shampoo does not need to be left in this stage of the process.

Towel hair dry and apply 20 - 40g of ALISA RESTORE BUTTER and leave for 5 minutes. Rinse thoroughly.

In the event of any loss of shade or tone, mix equal amounts of ALISA RESTORE BUTTER with Direct Fard, choosing the most suitable shade to restore the color. Cover hair with a cap and leave under a heat source for 5/10 minutes then rinse.

After rinsing and toweling dry, it is possible to use the heat protector Illumyna Thermo Discipline Milk (6 - 9 pumps).

Blow dry hair, directing the air from the hair dryer from top to bottom, accompanying it gently with your hands.

N.B. The treatment is still active after drying. If the problem areas are still slightly wavy, we recommend going over them 5 more times with the hair straighteners, following the same instructions and using the same temperature as before.

After finishing the heat-treatment step, complete the service with **GLOW DROPS**. Use the drop dispenser to dose the **GLOW DROPS**.



Dispense 2 to 6 squeezes/doses depending on the hair type (2 squeezes for short, fine hair / 6 squeezes for long, thick hair).

Apply evenly to the hair, gently rubbing the mid-lengths and ends.

N.B. GLOW DROPS are designed for use on mid-lengths and ends. This means it is not necessary to apply them to the first 3-4 cm of hair.

MAINTAINING THE TREATMENT

Wash hair with **RESTORE SHAMPOO**. Use twice, leaving the second application in place for 2-3 minutes. Rinse well. Apply **RESTORE BUTTER** to the mid-lengths and ends and leave in place for 5 minutes. Rinse carefully and proceed to style the hair as normal. The Alisa Anti-frizz and taming treatment does not replace styling products, but improves hair definition and management. If necessary, apply between 2 and 6 squeezes/doses of **GLOW DROPS** using the drop dispenser, gently rubbing the hair.



sens.ùs®
alisa

www.ilovesensus.it



@sens.ùs



@sensus_hairlovers