



sens.us[®]

ILLUMYNA
SCALP

TECH
GUIDE



sens.us[®]
ILLUMYNA
SCALP

The new **Illumyna Scalp line** cares for scalp and hair with products whose formulas boast **up to 95% natural ingredients*** and plant extracts and up to **98% biodegradability***.

Thanks to advanced technologies, it offers a scalp product capable of ensuring **high performance** while fully respecting the **wellbeing of the person and the earth** that hosts us.

*NATURALNESS: according to ISO 16128
BIODEGRADABILITY: according to OECD 301



* FOR HEALTHY AND STRONG HAIR

starting with the scalp

Illumyna Scalp comes from a wonderful land, Tuscany, whose fruits give life to a line created and designed for the well-being of our scalp.

Because it is from a healthy scalp that we have healthy and strong lengths, and it is from high quality products that we achieve healthy hair.

A line born from an extraordinary fruit, the grape, which is able to fight free radicals thanks to its powerful natural qualities.

MOISTURISES, CLEANSSES AND PROTECTS.

The importance of scalp health

Like the skin, the scalp also ages with time and can be affected or damaged by lifestyle and environmental aggressors.

The skin needs care and pampering to maintain its optimal state but above all to grow strong, shiny and healthy hair.

A state of stress and a weakened scalp can in fact cause dry, brittle and thinning hair that lacks lustre and is prone to breakage.

Keeping the scalp moisturised is a key factor and the first thing to do is to promote cell oxygenation, slowing hair loss, facilitating hair regrowth and counteracting excessive sebum formation.

YOUR
RITUAL
BEAUTY



sens.us® ILLUMYNA SCALP



Detox-Hydra
CLEANSER

1000ml - 33.81 fl.oz.
250ml - 8.45 fl.oz.

Detox-Hydra
MASK

1000ml - 33.81 fl.oz.
250ml - 8.45 fl.oz.

Detox-Hydra
PRE CLEANSER

150ml - 5.07 fl.oz.

DETOX-HYDRA

Cross-cutting detoxifying and hydrating line, ideal for all scalp problems.

Finally a properly cleansed scalp, free of every impurity thanks to Detox Hydra Cleanser shampoo, which sanitises and provides anti-smog protection without altering the scalp's protective acid mantle, giving a much-needed hydration boost to hair stressed by redness- and dandruff-causing fine particles.

But the shaft also needs nourishment: Detox Hydra Mask completes the treatment for deep-down re-hydration.



Balancing
CLEANSER

1000ml - 33.81 fl.oz.
250ml - 8.45 fl.oz.

Balancing
PRE CLEANSER

150ml - 5.07 fl.oz.

BALANCING

Sebum regulator and purifying line dedicated to effectively counteract the overproduction of sebum, ideal for oily scalp and heavy hair.

Purifies from impurities, restores the perfect balance of scalp and hair and promotes the maintenance of a healthy scalp.



Revitalizing
CLEANSER

1000ml - 33.81 fl.oz.
250ml - 8.45 fl.oz.

Revitalizing
MAINTENANCE LOTION

125ml - 4.22 fl.oz.

Revitalizing
INTENSE LOTION

12x10ml - 0.338 fl.oz.

REVITALIZING

The strengthening and energising line designed to give body and fullness to thin and weakened hair. Thanks to its technology based on Tuscan Grapes (Vitis Vinifera), Rosemary and hydrolyzed proteins it is able to invigorate the scalp and give thickness and strength to the hair, its stimulating properties help to slow down hair loss. For fragile hair prone to thinning. By using the treatment regularly, hair will be visibly fuller and healthier.

The soothing and emollient line ideal for normalizing sensitized, reddened and dehydrated scalp.

Its formulation is enriched by the precious mix of Cardiospermum, Echium and sunflower oil which are active ingredients known for their soothing properties that counteract inflammation and itching. The extracts of Tuscan Grapes (Vitis Vinifera), Aloe vera and Fermented Oats give relief to the skin, helping to normalise redness and irritation problems.



Soothing
CLEANSER

1000ml - 33.81 fl.oz.
250ml - 8.45 fl.oz.

Soothing
LOTION

125ml - 4.22 fl.oz.

SOOTHING

HOW THE LINE IS COMPOSED



Pre-shampoo

Preparing the scalp to receive Illumyna Scalp treatments sets the stage for excellent results. The full and intensive service opens with two pre-shampoo products. These prepare the scalp for the next steps and optimize results.

PRE CLEANSER



Shampoo

Illumyna Scalp shampoo products are specifically made for scalp cleansing and treatment, unlike those meeting the cleansing needs of normal hair and special hair (colour-treated hair, sensitised hair, etc.). The three shampoo products treat scalp problems effectively, supporting the scalp's normalising activity.

CLEANSER



Mask

Some scalp problems require the purifying, nourishing and moisturising action of a targeted scalp care treatment. Detox-Hydra MASK is a cream that treats the scalp and hair with a light and purifying effect.

MASK

Lotions

The final stage of the Illumyna Scalp treatment includes three lotions: two lotions target hair loss and the third lotion targets scalp dehydration and sensitivity



COMPLETE TREATMENT RITUAL FOR SENSITIVE SKIN

1. At the salon, prepare the client for treatment.

In a bowl, add **20-25 g** of Sens.ùs Illumyna **Detox-Hydra PRE CLEANSER**.

2. Tracing sections with a comb, apply Sens.ùs Illumyna Scalp **Detox-Hydra PRE CLEANSER** generously to the scalp with a brush.

Massage gently in rotating movements to evenly distribute Sens.ùs Illumyna Scalp **Detox-Hydra PRE CLEANSER**.

3. Wet, or soak a cotton towel in warm water, remove excess water and create a turban covering the entire hair, leave on for **5/10 minutes**.

After the application time has elapsed, have the client sit down to wash, release the hair from the turban and, adding water as needed, massage in until the Sens.ùs Illumyna Scalp **Detox-Hydra PRE CLEANSER** is completely rinsed out.

4. After rinsing the Sens.ùs Illumyna Scalp **Detox-Hydra PRE CLEANSER** pour 10-15 ml of Sens.ùs Illumyna Scalp **Soothing CLEANSER** in a nozzle applicator.

5. Use the nozzle of the applicator to separate and apply Sens.ùs Illumyna Scalp **Soothing CLEANSER** **directly** on the scalp. After application, massage gently with rotating movements to evenly distribute the Sens.ùs Illumyna Scalp **Soothing CLEANSER** and create a pleasant lather.

Leave on for 5 minutes, then rinse with plenty of water.



N.B. Sens.ùs Illumyna Scalp Soothing CLEANSER is a cleansing treatment for scalp abnormalities. It is not necessary to massage the lengths and ends, but it is sufficient to gently glide the lather created by massaging into the scalp. If more cleansing of the lengths and ends is needed, it is possible to apply the most suitable ILLUMYNA SHAMPOO for the hair type to the lengths and ends while applying Sens.ùs Illumyna Scalp Soothing CLEANSER.

If necessary, especially when treating long hair, after patting the hair dry, apply the most suitable ILLUMYNA TREATMENT to the hair, leaving it on as described in the Illumyna services, then rinse thoroughly.

6. Pat the hair, wrap it in a turban and seat the client at the workstation.

Release the hair from the turban and comb through the hair, bringing the hair towards the back. Using the drop applicator, distribute Sens.ùs Illumyna Scalp **Soothing LOTION** directly onto the scalp, then, with a gentle massage, distribute the product evenly. Do not rinse.

If necessary, apply the ELIXIR LEAVE-IN ILLUMYNA best suited to the hair. Style as desired.

PREPARATION



20-25 g
Detox-Hydra
PRE CLEANSER



RINSE

CLEANSING



10-15 ml
Soothing
CLEANSER



RINSE

LENGTH AND ENDS TREATMENT*



*Sens.ùs Illumyna

if necessary, apply the ILLUMYNA treatment best suited to the hair

SCALP TREATMENT



Soothing
Lotion

Distribute gently with massage

DO NOT RINSE

LENGTH AND ENDS TREATMENT*



*Sens.ùs Illumyna

If necessary, apply the most suitable ELIXIR LEAVE-IN ILLUMYNA for the hair

STYLING AND FINISH**



**Sens.ùs T@B>ù

Style as desired

COMPLETE HAIR LOSS TREATMENT RITUAL - INTENSIVE

- 1.** At the salon, prepare the client for treatment.

In a bowl, add **20-25 g** of Sens.ùs Illumyna **Detox-Hydra PRE CLEANSER**.



- 2.** Tracing sections with a comb, apply Sens.ùs Illumyna Scalp **Detox-Hydra PRE CLEANSER** generously to the scalp with a brush.

Massage gently with rotating movements to evenly distribute Sens.ùs Illumyna Scalp **Detox-Hydra PRE CLEANSER**, slightly intensifying the massage in the final phase.



- 3.** Wet, or soak a cotton towel in warm water, remove excess water and create a turban covering the entire hair, leave on for **5/10 minutes**.



After the application time has elapsed, have the client sit down to wash, release the hair from the turban and, adding water as needed, massage in until the Sens.ùs Illumyna Scalp **Detox-Hydra PRE CLEANSER** is completely rinsed out.

- 4.** Pour 10-15 ml of Sens.ùs Illumyna Scalp **Revitalising CLEANSER** into a nozzle applicator.



- 5.** Use the nozzle of the applicator to separate and apply Sens.ùs Illumyna Scalp **Revitalising CLEANSER** **directly** on the scalp.

After application, massage gently with rotating movements to evenly distribute Sens.ùs Illumyna Scalp **Revitalising CLEANSER** and create a pleasant lather. Leave on for 5 minutes, then rinse.



N.B. Sens.ùs Illumyna Scalp Revitalising CLEANSER is a cleansing treatment for scalp abnormalities. It is not necessary to massage the lengths and ends, but it is sufficient to gently rub the lather created by massaging into the scalp. If more cleansing of the lengths and ends is required, the most suitable ILLUMYNA SHAMPOO for the hair type can be applied to these while applying Sens.ùs Illumyna Scalp Revitalising CLEANSER.

If necessary, especially when treating long hair, after patting the hair dry, apply the most suitable ILLUMYNA TREATMENT to the hair, leaving it on as described in the Illumyna services, then rinse thoroughly.

- 6.** Pat the hair, wrap it in a turban and seat the client at the workstation.

Release the hair from the turban and comb through the hair, bringing the hair towards the back. Using the drop applicator, distribute Sens.ùs Illumyna Scalp **Revitalising INTENSE LOTION** directly onto the scalp, then, with a light massage, distribute the product evenly. Do not rinse.

If necessary, apply the ELIXIR LEAVE-IN ILLUMYNA best suited to the hair. Style as desired.



- 1.** At the salon, prepare the client for treatment.

In a bowl, add **20-25 g** of Sens.ùs Illumyna **Detox-Hydra PRE CLEANSER**.



- 2.** Tracing sections with a comb, apply Sens.ùs Illumyna Scalp **Detox-Hydra PRE CLEANSER** generously to the scalp with a brush.

Massage gently with rotating movements to evenly distribute Sens.ùs Illumyna Scalp **Detox-Hydra PRE CLEANSER**, slightly intensifying the massage in the final phase.



- 3.** Wet, or soak a cotton towel in warm water, remove excess water and create a turban covering the entire hair, leave on for **5/10 minutes**.



After the application time has elapsed, have the client sit down to wash, release the hair from the turban and, adding water as needed, massage in until the Sens.ùs Illumyna Scalp **Detox-Hydra PRE CLEANSER** is completely rinsed out.

- 4.** Pour 10-15 ml of Sens.ùs Illumyna Scalp **Revitalising CLEANSER** into a nozzle applicator.



- 5.** Use the nozzle of the applicator to separate and apply Sens.ùs Illumyna Scalp **Revitalising CLEANSER** directly onto the scalp.

After application, massage gently with rotating movements to evenly distribute Sens.ùs Illumyna Scalp **Revitalising CLEANSER** and create a pleasant lather. Leave on for 5 minutes, then rinse.



N.B. Sens.ùs Illumyna Scalp Revitalising CLEANSER is a cleansing treatment for scalp abnormalities. It is not necessary to massage the lengths and ends, but it is sufficient to gently rub the lather created by massaging into the scalp. If more cleansing of the lengths and ends is required, the most suitable ILLUMYNA SHAMPOO for the hair type can be applied to these while applying Sens.ùs Illumyna Scalp Revitalising CLEANSER.

If necessary, especially when treating long hair, after patting the hair dry, apply the most suitable ILLUMYNA TREATMENT to the hair, leaving it on as described in the Illumyna services, then rinse thoroughly.

- 6.** Pat the hair, wrap it in a turban and seat the client at the workstation.

Release the hair from the turban and comb through the hair, bringing the hair towards the back. Using the drop applicator, distribute Sens.ùs Illumyna Scalp **Revitalising MAINTENANCE LOTION** by gently massaging in for 2-3 minutes. Do not rinse.

If necessary, apply the ELIXIR LEAVE-IN ILLUMYNA best suited to the hair. Style as desired.



PREPARATION	CLEANSING	LENGTH AND ENDS TREATMENT*	SCALP TREATMENT	LENGTH AND ENDS TREATMENT*	STYLING AND FINISH**
20-25 g Detox-Hydra PRE CLEANSER	10-15 ml Revitalizing CLEANSER	*Sens.ùs Illumyna	Revitalizing INTENSE LOTION	*Sens.ùs Illumyna	**Sens.ùs T@B>ù
5/10 min. leave-in	5 min. leave-in	if necessary, apply the ILLUMYNA treatment best suited to the hair	5 min. massage	if necessary, apply the most suitable ELIXIR LEAVE-IN ILLUMYNA for the hair	Style as desired
RINSE	RINSE		DO NOT RINSE		

PREPARATION	CLEANSING	LENGTH AND ENDS TREATMENT*	SCALP TREATMENT	LENGTH AND ENDS TREATMENT*	STYLING AND FINISH**
20-25 g Detox-Hydra PRE CLEANSER	10-15 ml Revitalizing CLEANSER	*Sens.ùs Illumyna	Revitalizing MAINTENANCE LOTION	*Sens.ùs Illumyna	**Sens.ùs T@B>ù
5/10 min. leave-in	5 min. leave-in	if necessary, apply the ILLUMYNA treatment best suited to the hair	2/3 min. massage	if necessary, apply the most suitable ELIXIR LEAVE-IN ILLUMYNA for the hair	Style as desired
RINSE	RINSE		DO NOT RINSE		

COMPLETE TREATMENT RITUAL DRY DANDRUFF

1. Prepare the client for the treatment at the work station.

Put 20-25 g of Sens.ùs Illumyna Scalp **Detox-Hydra PRE CLEANSER** in a bowl

2. Using a brush, apply a generous amount of Sens.ùs Illumyna Scalp **Detox-Hydra PRE CLEANSER** on the scalp as you separate sections with a comb.

Massage gently in a circular motion to distribute Sens.ùs Illumyna Scalp **Detox-Hydra PRE CLEANSER** evenly and finish with slightly more vigorous movements.

3. Wet or soak a cotton towel in warm water, remove the excess water and wrap around the head in a turban until the hair is entirely covered; allow to process for 5-10 minutes.

Once the processing time has elapsed, invite the client to sit at the wash station, remove the wrap, and slowly add water and massage until **Detox-Hydra PRE CLEANSER** has been completely rinsed out.

4. Pour 10-15 ml of Sens.ùs Illumyna Scalp **Detox-Hydra CLEANSER** in an applicator bottle.

5. Separate the hair with the applicator tip and apply Sens.ùs Illumyna Scalp **Detox-Hydra CLEANSER** directly on the scalp.

Once applied, massage gently with a circular motion to distribute Sens.ùs Illumyna Scalp **Detox-Hydra CLEANSER** evenly and create a nice lather. Leave in place for 5 minutes then rinse. Towel-dry the hair, wrap in a turban and invite the client to sit at the work station.

Remove the turban and comb the hair towards the back.

N.B. Note: Sens.ùs Illumyna Scalp Detox-Hydra CLEANSER is a cleansing treatment for scalp problems; there is no need to rub it excessively into the mid-lengths and ends. Simply massage it into the scalp and smooth the lather created down the hair strands to the ends. If the mid-lengths and ends require more cleansing, you can apply the appropriate ILLUMYNA SCALP SHAMPOO for the hair type while Sens.ùs Illumyna Scalp Detox-Hydra CLEANSER is processing.

6. Put 40-60 g of Sens.ùs Illumyna Scalp **Detox-Hydra MASK** in a bowl

Using a brush, apply a generous amount of Sens.ùs Illumyna Scalp **Detox-Hydra MASK** on the scalp as you separate sections with a comb. Massage gently with a circular motion in order to distribute Sens.ùs Illumyna Scalp **Detox-Hydra MASK** evenly. Wet or soak a cotton towel in warm water, remove the excess water and wrap around the head in a turban until the hair is entirely covered; allow to process for 5 minutes. Once the processing time has elapsed, invite the client to sit at the wash station, remove the wrap, and slowly add water and massage until **Detox-Hydra MASK** has been completely rinsed out.

If necessary and for long hair in particular, you can apply Detox-Hydra MASK or the appropriate ILLUMYNA TREATMENT for the hair type, leave in place as directed in the Illumyna service instructions, and then rinse thoroughly.

PREPARATION



20-25 g
Detox-Hydra
PRE CLEANSER



RINSE

CLEANSING



10-15 ml
Detox-Hydra
CLEANSER



RINSE

SCALP TREATMENT



40-60 g
Detox-Hydra
MASK



RINSE

TREATMENT FOR MID-LENGTHS AND ENDS*



*Sens.ùs Illumyna

If necessary, apply the appropriate Detox-Hydra MASK or ILLUMYNA TREATMENT for the hair type



*Sens.ùs Illumyna

If necessary, apply the appropriate ELIXIR LEAVE-IN ILLUMYNA for the hair type.

STYLING AND FINISHING**



**Sens.ùs T@B>ù

Proceed to style

COMPLETE TREATMENT RITUAL OILY DANDRUFF

1. Prepare the client for the treatment at the work station.

Put 20-25 g of Sens.ùs Illumyna Scalp **Balancing PRE CLEANSER** in a bowl.

2. Using a brush, apply a generous amount of Sens.ùs Illumyna Scalp **Balancing PRE CLEANSER** on the scalp as you separate sections with a comb.

Massage gently in a circular motion to distribute Sens.ùs Illumyna Scalp **Balancing PRE CLEANSER** evenly and finish with slightly more vigorous movements.

3. Wet or soak a cotton towel in warm water, remove the excess water and wrap around the head in a turban until the hair is entirely covered; allow to process for 5-10 minutes.

Once the processing time has elapsed, invite the client to sit at the wash station, remove the wrap, and slowly add water and massage until **Balancing PRE CLEANSER** has been completely rinsed out.

4. Pour 10-15 ml of Sens.ùs Illumyna Scalp **Detox-Hydra CLEANSER** in an applicator bottle.

5. Separate the hair with the applicator tip and apply Sens.ùs Illumyna Scalp **Detox-Hydra CLEANSER** directly on the scalp.

Once applied, massage gently with a circular motion to distribute Sens.ùs Illumyna Scalp **Detox-Hydra CLEANSER** evenly and create a nice lather.

Leave in place for 5 minutes then rinse

N.B. Sens.ùs Illumyna Scalp Detox-Hydra CLEANSER is a cleansing treatment for scalp problems; there is no need to rub it excessively into the mid-lengths and ends. Simply massage it into the scalp and smooth the lather created down the hair strands to the ends. If the mid-lengths and ends require more cleansing, you can apply the appropriate ILLUMYNA SCALP SHAMPOO for the hair type while Sens.ùs Illumyna Scalp Detox-Hydra CLEANSER is processing.

If necessary and for long hair in particular, apply the appropriate ILLUMYNA TREATMENT for the hair type after towel-drying, leave in place as directed in the Illumyna service instructions, and then rinse thoroughly.

6. Towel-dry the hair, wrap in a turban and invite the client to sit at the work station.

Remove the turban and comb the hair towards the back.

In case of oily dandruff and no other existing scalp problems, proceed without the use of lotions or masks.

If necessary, apply the appropriate ELIXIR LEAVE-IN ILLUMYNA for the hair type. Proceed to style.

PREPARATION



20-25 g
Balancing
PRE CLEANSER



RINSE

CLEANSING



10-15 ml
Detox-Hydra
CLEANSER



RINSE

TREATMENT FOR MID-LENGTHS AND ENDS*



*Sens.ùs Illumyna

If necessary, apply the appropriate Detox-Hydra MASK or ILLUMYNA TREATMENT for the hair type



*Sens.ùs Illumyna

If necessary, apply the appropriate ELIXIR LEAVE-IN ILLUMYNA for the hair type.

STYLING AND FINISHING**



**Sens.ùs T@B>ù

Proceed to style

COMPLETE SEBUM TREATMENT RITUAL

- At the salon, prepare the client for treatment.

In a bowl, add **20-25 g** of Sens.ùs Illumyna **Balancing PRE CLEANSER**.

- Tracing sections with a comb, apply Sens.ùs Illumyna Scalp **Balancing PRE CLEANSER** generously to the scalp with a brush.

Massage gently with rotating movements to evenly distribute Sens.ùs Illumyna Scalp **Balancing PRE CLEANSER**, slightly intensifying the massage in the final phase.

- Wet, or soak a cotton towel in warm water, remove excess water and create a turban covering the entire hair, leave on for **5/10 minutes**.

After the application time has elapsed, have the client sit down to wash, release the hair from the turban and, adding water as needed, massage in until the Sens.ùs Illumyna Scalp **Balancing PRE CLEANSER** is completely rinsed out.

- Add 10-15 ml of Sens.ùs Illumyna Scalp **Balancing CLEANSER** into a nozzle applicator.

- Use the nozzle of the applicator to separate and apply Sens.ùs Illumyna Scalp **Balancing CLEANSER** directly onto the scalp.

After application, massage gently with rotating movements to evenly distribute Sens.ùs Illumyna Scalp **Balancing CLEANSER** and create a pleasant lather. Leave on for 5 minutes, then rinse.

5 min.

*N.B. Sens.ùs Illumyna **Balancing CLEANSER** is a cleansing treatment for scalp abnormalities. It is not necessary to massage the lengths and ends, but it is sufficient to gently glide the lather created by massaging into the scalp. If more cleansing of the lengths and ends is needed, it is possible to apply the most suitable ILLUMYNA SHAMPOO for the hair type to the lengths and ends while applying Sens.ùs Illumyna Scalp **Balancing CLEANSER**.*

If necessary, especially when treating long hair, after patting the hair dry, apply the most suitable ILLUMYNA TREATMENT to the hair, leaving it on as described in the Illumyna services, then rinse thoroughly.

- Without other skin problems proceed without the use of lotions.

Pat the hair, wrap it in a turban and seat the client at the workstation. Release the hair from the turban and comb through the hair, bringing the hair towards the back.

If necessary, apply the ELIXIR LEAVE-IN ILLUMYNA best suited to the hair. Style as desired.

BASIC SENSITIVE SCALP TREATMENT RITUAL

- Pat the hair, wrap it in a turban and seat the customer at the workstation.

Release the hair from the turban and comb through the hair, bringing the hair towards the back. Using the drop applicator, distribute Sens.ùs Illumyna Scalp **Soothing LOTION** directly onto the scalp, then, with a gentle massage, distribute the product evenly.

Do not rinse.

If necessary, apply the ELIXIR LEAVE-IN ILLUMYNA best suited to the hair. Style as desired.

- Wet the entire hair. Add 10-15 ml of Sens.ùs Illumyna Scalp **Soothing CLEANSER** into a nozzle applicator.

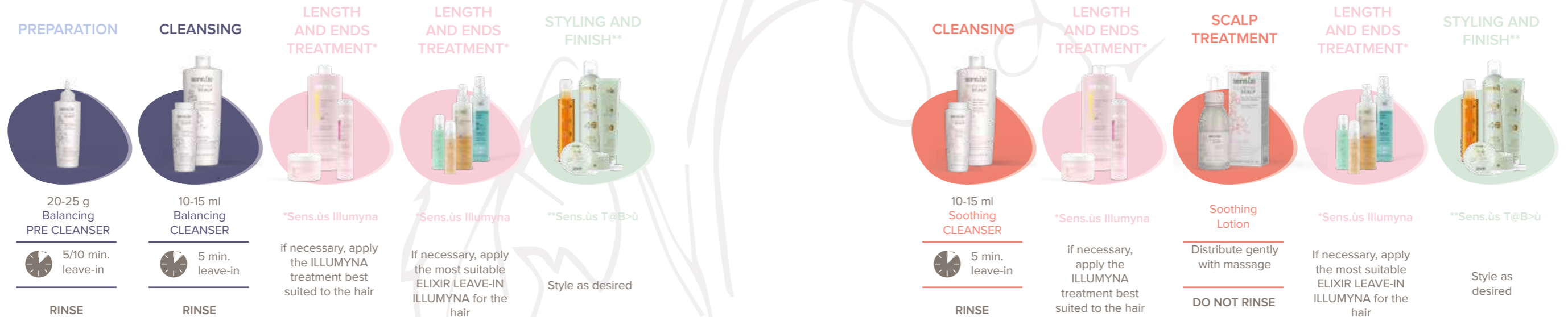
- Use the nozzle of the applicator to separate and apply Sens.ùs Illumyna Scalp **Soothing CLEANSER** directly onto the scalp.

- After application, massage gently with rotating movements to evenly distribute the Sens.ùs Illumyna Scalp **Soothing CLEANSER** and create a pleasant lather.

Leave on for 5 minutes, then rinse with plenty of water. 5 min.

*N.B. Sens.ùs Illumyna Scalp **Soothing CLEANSER** is a cleansing treatment for scalp abnormalities. It is not necessary to massage the lengths and ends, but it is sufficient to gently glide the lather created by massaging into the scalp. If more cleansing of the lengths and ends is needed, it is possible to apply the most suitable ILLUMYNA SHAMPOO for the hair type to the lengths and ends while applying Sens.ùs Illumyna Scalp **Soothing CLEANSER**.*

If necessary, especially when treating long hair, after patting the hair dry, apply the most suitable ILLUMYNA TREATMENT to the hair, leaving it on as described in the Illumyna services, then rinse thoroughly.



BASIC HAIR LOSS TREATMENT RITUAL - INTENSIVE

1. Wet the entire hair. Pour 10-15 ml of Sens.ùs Illumyna Scalp **Revitalising CLEANSER** into a nozzle applicator.

2. Use the nozzle of the applicator to separate and apply Sens.ùs Illumyna Scalp **Revitalising CLEANSER** directly onto the scalp.

3. After application, massage gently with rotating movements to evenly distribute Sens.ùs Illumyna Scalp **Revitalising CLEANSER** and create a pleasant lather.

Leave on for 5 minutes, then rinse with plenty of water.

N.B. Sens.ùs Illumyna Scalp Revitalising CLEANSER is a cleansing treatment for scalp abnormalities. It is not necessary to massage the lengths and ends, but it is sufficient to gently rub the lather created by massaging into the scalp. If more cleansing of the lengths and ends is required, the most suitable ILLUMYNA SHAMPOO for the hair type can be applied to these while applying Sens.ùs Illumyna Scalp Revitalising CLEANSER.

If necessary, especially when treating long hair, after patting the hair dry, apply the most suitable ILLUMYNA TREATMENT to the hair, leaving it on as described in the Illumyna services, then rinse thoroughly.



4. Pat the hair, wrap it in a turban and seat the customer at the workstation.

Release the hair from the turban and comb through the hair, bringing the hair towards the back. Using the nozzle of the ampoule to dispense Sens.ùs Illumyna Scalp **Revitalising INTENSE LOTION** directly onto the scalp by massaging gently for 4-5 minutes.

Do not rinse.

If necessary, apply the ELIXIR LEAVE-IN ILLUMYNA best suited to the hair. Style as desired.



5 min.

BASIC HAIR LOSS TREATMENT RITUAL - MAINTENANCE

1. Wet the entire hair. Pour 10-15 ml of Sens.ùs Illumyna Scalp **Revitalising CLEANSER** into a nozzle applicator.

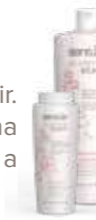
2. Use the nozzle of the applicator to separate and apply Sens.ùs Illumyna Scalp **Revitalising CLEANSER** directly onto the scalp.

3. After application, massage gently with rotating movements to evenly distribute the Sens.ùs Illumyna Scalp **Soothing CLEANSER** and create a pleasant lather.

Leave on for 5 minutes, then rinse with plenty of water.

N.B. Sens.ùs Illumyna Scalp Revitalising CLEANSER is a cleansing treatment for scalp abnormalities. It is not necessary to massage the lengths and ends, but it is sufficient to gently rub the lather created by massaging into the scalp. If more cleansing of the lengths and ends is required, the most suitable ILLUMYNA SHAMPOO for the hair type can be applied to these while applying Sens.ùs Illumyna Scalp Revitalising CLEANSER.

If necessary, especially when treating long hair, after patting the hair dry, apply the most suitable ILLUMYNA TREATMENT to the hair, leaving it on as described in the Illumyna services, then rinse thoroughly.



4. Pat the hair, wrap it in a turban and seat the customer at the workstation.

Release the hair from the turban and comb through the hair, bringing the hair towards the back. Using the drop applicator, distribute the Sens.ùs Illumyna Scalp **Revitalizing MAINTENANCE LOTION** by gently **massaging** in for 2-3 minutes.

Do not rinse.

If necessary, apply the ELIXIR LEAVE-IN ILLUMYNA best suited to the hair. Style as desired.



2/3 min.

CLEANSING	LENGTH AND ENDS TREATMENT*	SCALP TREATMENT	LENGTH AND ENDS TREATMENT*	STYLING AND FINISH**
10-15 ml Revitalizing CLEANSER	*Sens.ùs Illumyna	Revitalizing INTENSE LOTION	*Sens.ùs Illumyna	**Sens.ùs T@B>ù
5 min. leave-in	if necessary, apply the ILLUMYNA treatment best suited to the hair	5 min. massage	If necessary, apply the most suitable ELIXIR LEAVE-IN ILLUMYNA for the hair	Style as desired
RINSE		DO NOT RINSE		

CLEANSING	LENGTH AND ENDS TREATMENT*	SCALP TREATMENT	LENGTH AND ENDS TREATMENT*	STYLING AND FINISH**
10-15 ml Revitalizing CLEANSER	*Sens.ùs Illumyna	Revitalizing MAINTENANCE LOTION	*Sens.ùs Illumyna	**Sens.ùs T@B>ù
5 min. leave-in	if necessary, apply the ILLUMYNA treatment best suited to the hair	2/3 min. massage	If necessary, apply the most suitable ELIXIR LEAVE-IN ILLUMYNA for the hair	Style as desired
RINSE		DO NOT RINSE		

COMPLETE TREATMENT RITUAL DRY DANDRUFF

1. Wet the hair at the wash station to prepare the client for the treatment. Pour 10-15 ml of Sens.ùs Illumyna Scalp **Detox-Hydra CLEANSER** in an applicator bottle.

2. Separate the hair with the applicator tip and apply Sens.ùs Illumyna Scalp **Detox-Hydra CLEANSER** directly on the scalp.

3. Once applied, massage gently with a circular motion to distribute Sens.ùs Illumyna Scalp **Detox-Hydra CLEANSER** evenly and create a nice lather.

Leave in place for 5 minutes then rinse.



4. Towel-dry the hair, wrap in a turban and invite the client to sit at the work station.

Remove the turban and comb the hair towards the back.

5. Put 40-60 g of Sens.ùs Illumyna Scalp **Detox-Hydra MASK** in a bowl

Using a brush, apply a generous amount of Sens.ùs Illumyna Scalp **Detox-Hydra MASK** on the scalp as you separate sections with a comb.

Massage gently with a circular motion in order to distribute Sens.ùs Illumyna Scalp **Detox-Hydra MASK** evenly. Wet or soak a cotton towel in warm water, remove the excess water and wrap around the head in a turban until the hair is entirely covered; allow to process for 5 minutes.

Once the processing time has elapsed, invite the client to sit at the wash station, remove the wrap, and slowly add water and massage until **Detox-Hydra MASK** has been completely rinsed out.

If necessary and for long hair in particular, you can apply Detox-Hydra MASK or the appropriate ILLUMYNA TREATMENT for the hair type, leave in place as directed in the Illumyna service instructions, and then rinse thoroughly.

If necessary, apply the appropriate ELIXIR LEAVE-IN ILLUMYNA for the hair type. Proceed to style.



5 min.



5 min.

<p>CLEANSING</p> <p>10-15 ml Detox-Hydra CLEANSER</p> <p> PROCESS 5'</p> <p>RINSE</p>	<p>SCALP TREATMENT</p> <p>40-60 g Detox-Hydra MASK</p> <p> PROCESS 5'</p> <p>RINSE</p>	<p>TREATMENT FOR MID-LENGTHS AND ENDS*</p> <p>*Sens.ùs Illumyna</p> <p>If necessary, apply the appropriate Detox-Hydra MASK or ILLUMYNA TREATMENT for the hair type</p>	<p>STYLING AND FINISHING**</p> <p>**Sens.ùs T@B>ù</p> <p>If necessary, apply the appropriate ELIXIR LEAVE-IN ILLUMYNA for the hair type.</p> <p>Proceed to style</p>
--	---	--	--

COMPLETE TREATMENT RITUAL OILY DANDRUFF

1. Wet the hair at the wash station to prepare the client for the treatment. Pour 10-15 ml of Sens.ùs Illumyna Scalp **Detox-Hydra CLEANSER** in an applicator bottle.

2. Separate the hair with the applicator tip and apply Sens.ùs Illumyna Scalp **Detox-Hydra CLEANSER** directly on the scalp.

3. Once applied, massage gently with a circular motion to distribute Sens.ùs Illumyna Scalp **Detox-Hydra CLEANSER** evenly and create a nice lather.

Leave in place for 5 minutes then rinse.



4. Towel-dry the hair, wrap in a turban and invite the client to sit at the work station.

Remove the turban and comb the hair towards the back.

In case of oily dandruff and no other existing scalp problems, proceed without the use of lotions or masks.

If necessary, apply the appropriate ELIXIR LEAVE-IN ILLUMYNA for the hair type. Proceed to style.



5 min.

N.B. Sens.ùs Illumyna Scalp Detox-Hydra CLEANSER è un trattamento detergente per le anomalie del cuoio capelluto, non serve strofinare troppo le lunghezze e punte ma è sufficiente far scorrere delicatamente su lunghezze e punte la schiuma creata con il massaggio in cute. Se risultasse necessaria una maggior detersione di lunghezze e punte è possibile applicare su queste durante la posa di Sens.ùs Illumyna Scalp Detox-Hydra CLEANSER lo SHAMPOO ILLUMYNA SCALP più adeguato alla tipologia di capelli.

Se necessario, soprattutto nel trattamento dei capelli lunghi, dopo aver tamponato i capelli, applicare il TRATTAMENTO ILLUMYNA più adatto alla capigliatura lasciandolo in posa come da descrizione dei servizi Illumyna, quindi risciacquare abbondantemente.

<p>CLEANSING</p> <p>10-15 ml Detox-Hydra CLEANSER</p> <p> PROCESS 5'</p> <p>RINSE</p>	<p>TREATMENT FOR MID-LENGTHS AND ENDS*</p> <p>*Sens.ùs Illumyna</p> <p>If necessary, apply the appropriate Detox-Hydra MASK or ILLUMYNA TREATMENT for the hair type</p>	<p>STYLING AND FINISHING**</p> <p>**Sens.ùs T@B>ù</p> <p>If necessary, apply the appropriate ELIXIR LEAVE-IN ILLUMYNA for the hair type.</p> <p>Proceed to style</p>
--	--	--

BASIC HAIR LOSS TREATMENT RITUAL - INTENSIVE

1. Add 10-15 ml of Sens.ùs Illumyna Scalp **Balancing CLEANSER** into a nozzle applicator.



2. Use the nozzle of the applicator to separate and apply Sens.ùs Illumyna Scalp **Balancing CLEANSER** directly onto the scalp.



3. After application, massage gently with rotating movements to evenly distribute the Sens.ùs Illumyna Scalp **Balancing CLEANSER** and create a pleasant lather.



Leave on for 5 minutes, then rinse with plenty of water. **5 min.**

N.B. Sens.ùs Illumyna Balancing CLEANSER is a cleansing treatment for scalp abnormalities. It is not necessary to massage the lengths and ends, but it is sufficient to gently glide the lather created by massaging into the scalp. If more cleansing of the lengths and ends is needed, it is possible to apply the most suitable ILLUMYNA SHAMPOO for the hair type to the lengths and ends while applying Sens.ùs Illumyna Scalp Balancing CLEANSER.

If necessary, especially when treating long hair, after patting the hair dry, apply the most suitable ILLUMYNA TREATMENT to the hair, leaving it on as described in the Illumyna services, then rinse thoroughly.

4. Pat the hair, wrap it in a turban and seat the customer at the workstation.

Release the hair from the turban and comb through the hair, bringing the hair towards the back. Using the nozzle of the ampoule to dispense Sens.ùs Illumyna Scalp **Revitalising INTENSE LOTION** directly onto the scalp by massaging gently for 4-5 minutes.

Do not rinse.

If necessary, apply the ELIXIR LEAVE-IN ILLUMYNA best suited to the hair. Style as desired.

5 min.

ADVICE ON THE USE OF RITUALS

COMPLETE/BASIC SOOTHING TREATMENT RITUAL SENSITIVE SCALP

The ritual treatment of sensitive scalp can be carried out as a prevention of the abnormality, or as a treatment to re-establish a correct skin balance for those who already have sensitivity.

A minimum period of **4 consecutive weeks** of treatment **twice a week** is recommended in order to stabilise any abnormalities present and then continue **4 weeks** by applying the lotion **once a week** to maintain skin balance.

Although the best effect of **Soothing** lotion is obtained after preparing the scalp with pre-cleanser and cleanser, the lotion can also be applied as needed, even on dry hair, with a light massage to soothe any discomfort.

Treatment	Follow up
4 weeks	4 weeks
2 times a week	1 time a week and/or as required

INTENSIVE REVITALIZING TREATMENT RITUAL/ HAIR LOSS TREATMENT

The **REVITALIZING INTENSIVE** treatment ritual can be carried out as a prevention of the abnormality, or as a treatment for those who show thinning or local hair loss.

For effective treatment where the abnormality is already present, a minimum period of **4 consecutive weeks** of intensive treatment **twice a week (8 ampoules)** followed by a further **4 weeks** of intensive treatment **once a week (4 ampoules)** is recommended

For a preventive treatment, a minimum period of **12 consecutive weeks** of intensive treatment **once a week (12 ampoules)** is recommended during the periods of the most important seasonal changes (autumn and spring), starting at least **2 weeks before the seasonal change**.

Although the best effect of **REVITALISING INTENSE LOTION** is obtained after preparing the scalp with **PRE CLEANSER** and **CLEANSER**, the lotion can also be applied to dry hair, with a light massage for about 5 minutes to distribute the lotion and stimulate the scalp's microcirculation

Prevention treatment	Intensive Treatment	Follow up
12 weeks	4 weeks	4 weeks
once a week	2 times a week	2 times a week



ADVICE ON THE USE OF RITUALS

REVITALISING TREATMENT RITUAL COMPLETE/BASIC MAINTENANCE HAIR LOSS

The **REVITALIZING MAINTENANCE** treatment ritual is recommended as a continuation of the intensive treatment for those who show thinning or local hair loss. For maintenance of skin balance after the intensive treatment, a **12-week** period of use is recommended at **twice a week**.

Although the best effect of **REVITALISING MAINTENANCE LOTION** is obtained after preparing the scalp with **PRE CLEANSER** and **CLEANSER**, the lotion can also be applied to dry hair, with a light massage of about 2/3 minutes to distribute the lotion and stimulate the scalp's microcirculation.

Maintenance

12 weeks

2 times a week

COMPLETE/BASIC TREATMENT RITUAL DRY/OILY DANDRUFF

The dry/oily dandruff treatment ritual is performed to treat the scalp problem of dandruff, and to re-establish the scalp's natural balance.

It is recommended that the treatment be used **twice a week** for a minimum period of **four consecutive weeks** in order to correct any issues present, followed by use **once a week** for **four weeks** as follow-up and to maintain the scalp's balance.

DETOX HYDRA MASK can be used in the treatment of dry dandruff problems, while it is not necessary if the problem concerns oily dandruff.

Treatment

4 weeks

Twice a week

Follow Up

4 weeks

Once a week

COMPLETE/BASIC BALANCING TREATMENT RITUAL SEBUM

The **BALANCING** treatment ritual is recommended as a treatment for those with persistent or temporary excess sebum problems to restore the necessary skin balance

Constant use of the treatment for the most intense cases or a **minimum** period of **4** consecutive **weeks** of treatment is recommended in order to stabilise any temporary abnormality.

Persistent anomaly treatment

Constant use

2 times a week

Temporary anomaly treatment

4 weeks

2 times a week



@sens.us @sensus_hairlovers

www.ilovesensus.it



G&P COSMETICS SRL

via Lorenzo Mascheroni, 27 - 20145 - MILANO (MI) - ilovesensus.it
UK RP - Passion4hair Ltd., 41 Queen St, C01 2PQ

REV.00 03/23

DOWNLOAD SENSUS APP

